

Step 01: Open ECS (Eclipse Configuration System) Software



Eclipse Configuration System

Step 02: (A), Go to “Cards and Ports” under “Hardware”. (B) Highlight the Panel you want to set and (C) tick True “Sys Config Access” in Advanced Settings

The screenshot shows the Eclipse Configuration System interface. On the left, the 'System' tree has 'Hardware' expanded, and 'Cards and Ports' is selected (marked with A). The main window displays a table of 'System Ports' with the following data:

System Port	Port Function	Talk Label	Listen Label	Description	Card
1	V 1RU Lever	PANEL	01		1
2	V 1RU Lever	PANEL	02		1
3	Telephone (TEL-14)	TELEP	HONE1		1
4	V Desktop Lever	PANEL	03		1
5	V 2RU Lever	PANEL	04		1
6	V 2RU Lever	PANEL	05		1
7	CCI-22	CHANN	EL A		1

Row 2 is highlighted (marked with B). On the right, the 'Advanced Settings' pane is open, and 'Sys Config Access' is checked (marked with C).

Step 03: (A) Select “Sort Groups” under “Configuration” and (B) create a “New” Sort Group that (C) you can rename as needed

The screenshot shows the Eclipse Configuration System interface. On the left, the 'System' tree has 'Configuration' expanded, and 'Sort Groups' is selected (marked with A). The main window displays the 'Sort Groups (SGP01)' configuration page. A 'New' button is highlighted (marked with B), and a text input field is shown with the text 'eded' (marked with C). Below the main area, there are two lists: 'Available' and 'Attached'.

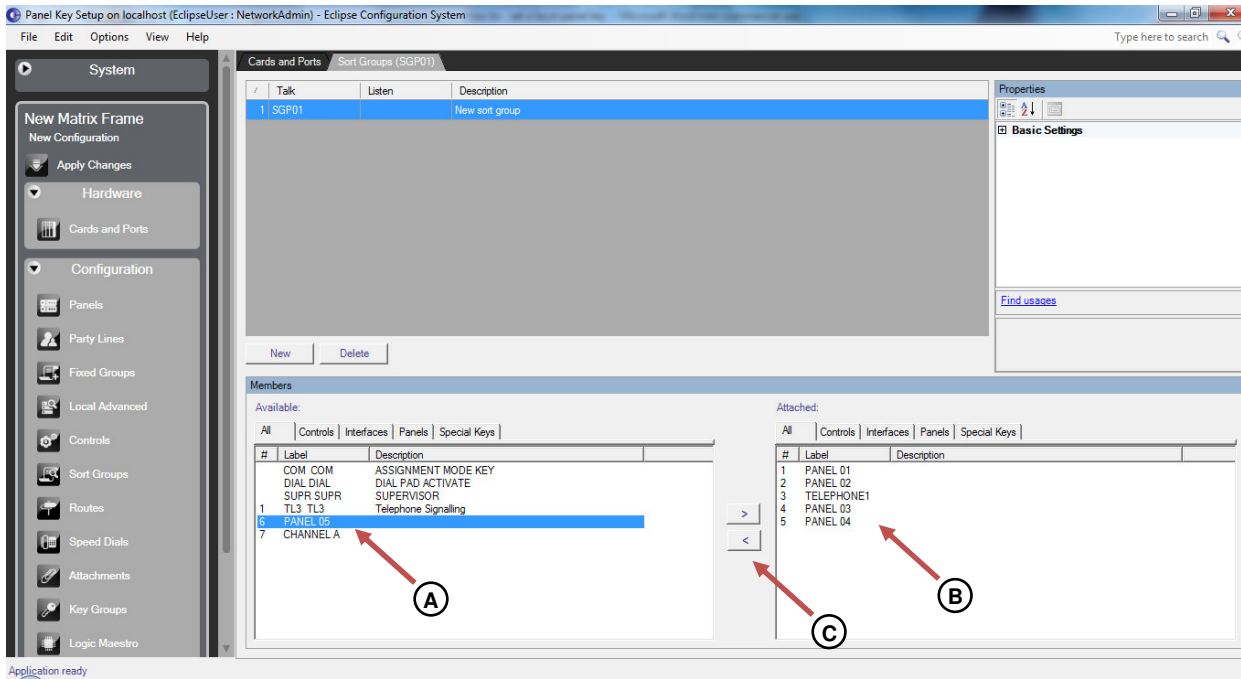
Available:

#	Label	Description
	COM COM	ASSIGNMENT MODE KEY
	DIAL DIAL	DIAL PAD ACTIVATE
	SUPR SUPR	SUPERVISOR
1	PANEL 01	
1	TL3 TL3	
2	PANEL 02	
3	TELEPHONE1	
4	PANEL 03	
5	PANEL 04	
6	PANEL 05	
7	CHANNEL A	

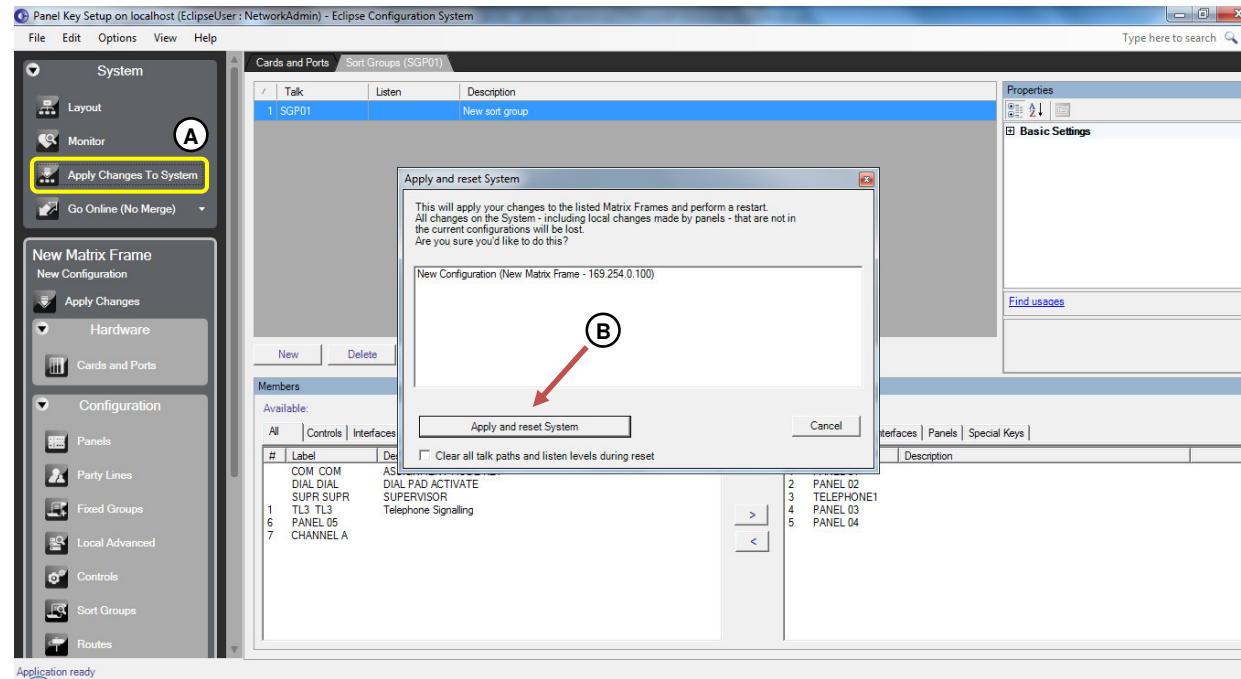
Attached:

#	Label	Description
---	-------	-------------

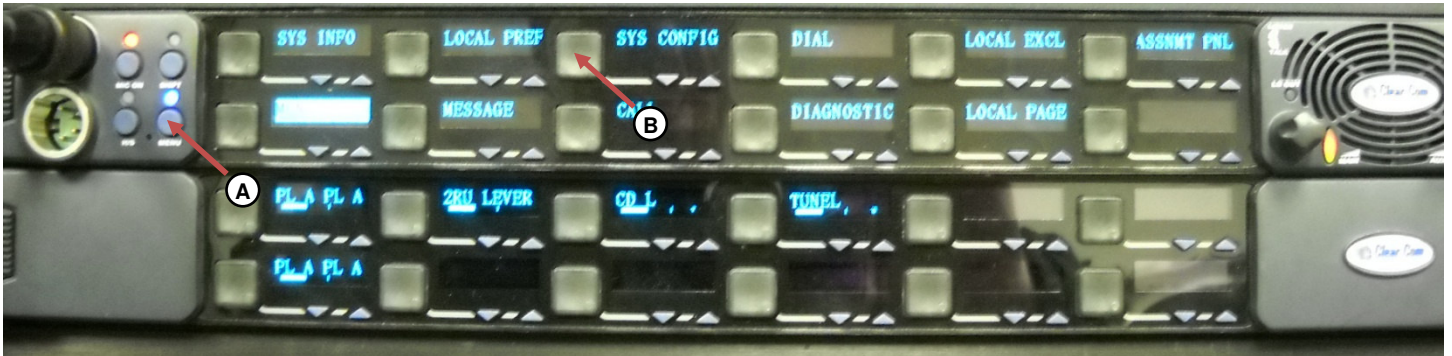
Step 04: (A) Populate the New Sort Group with “Available” Members you want to make (B) “Attached” Members. (C) Highlight a Member and use the arrows to move it



Step 05: (A) Select “Apply Changes to System” under “System” to update your Frame. (B) “Apply and reset System



Step 06: On your V-Series Panel, go to (A) “MENU” and (B) select “SYS CONFIG”



Step 07: (A) Go to “LOCAL PNL”



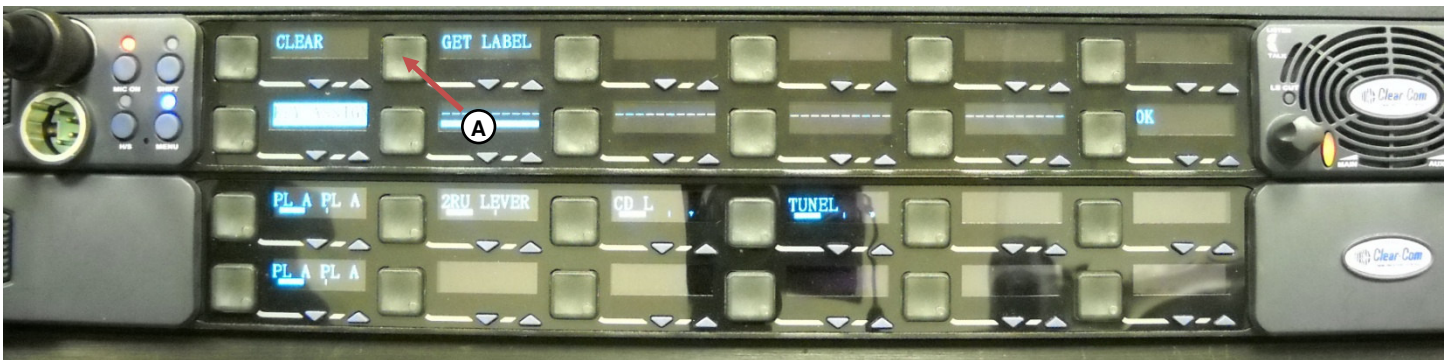
Step 08: (A) Go to “LOCAL KEYS”



Step 09: (A) Select an unused Key Location on your Panel



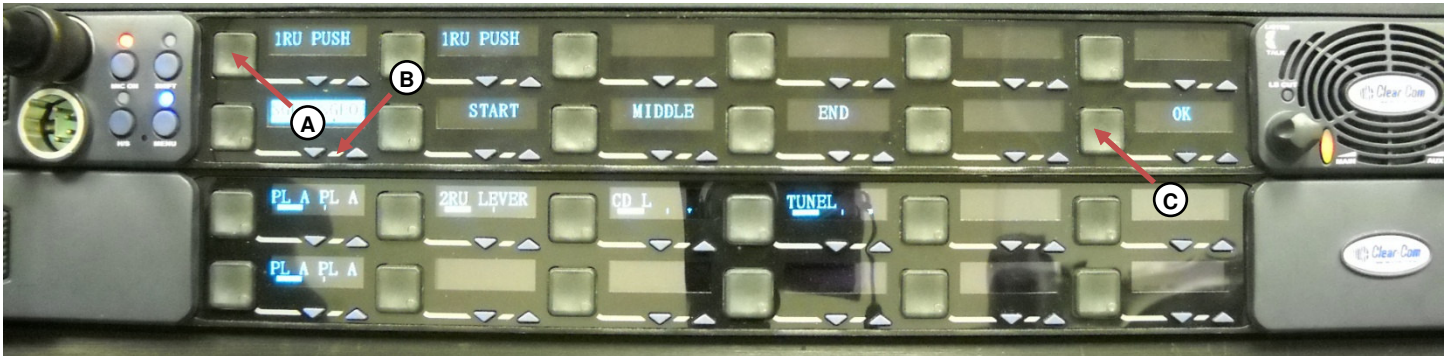
Step 10: (A) Go to "GET LABEL"



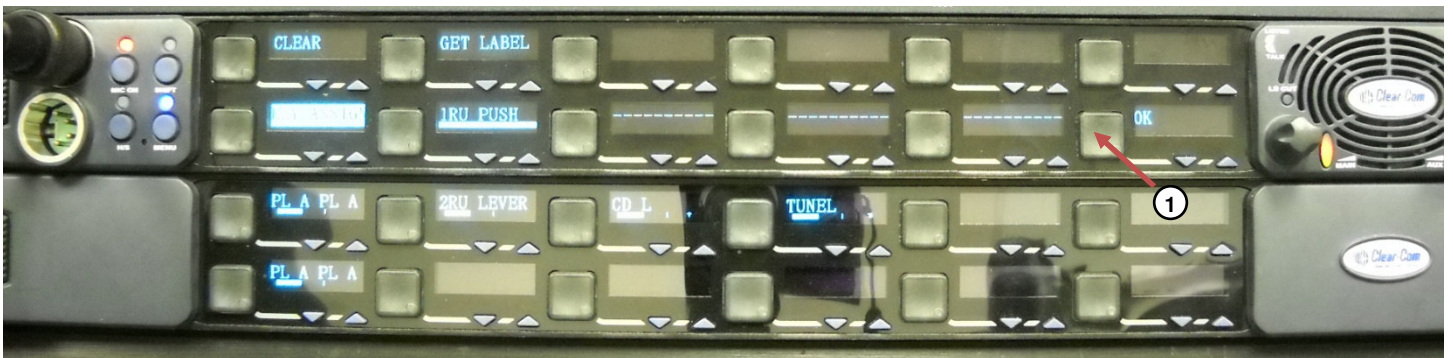
Step 11: (A) Select your Sort Group



Step 12: (A) Select the Label you need (use START, MIDDLE and END if your Sort Group is extensive. (B) Use arrows buttons to see all Panels) and (C) click “OK”



Step 13: (A) Click “OK” again to confirm



Step 14: Your selected Label will show at the desired location (A)



Step 15: (A) Press the “MENU” button to get back to normal operation

