



## Applying configuration changes to an EHX matrix



Figure 1 Screenshot show different options for **Go Live** feature.

There are several options when it comes to pushing configuration changes from EHX software to a matrix.

Changes to panel keys and forced and blocked listens (live components) can be made in real time by using **Go Live** (Figure 1). The default option here is **No Merge**. This means that changes to any of the live components within EHX software (PC) that differ from the (map stored in the) matrix will not be pushed to the frame. Likewise, if keys have been assigned by panel-users (using Fast Key Assign or Soft Assign modes), these will not be recorded on the PC.

**Go Live (EHX to System)** means that changes to live components, made offline within the PC (EHX), will be pushed to the matrix (System) upon going live. This means that you can make a large amount of offline panel key changes (for example) and then use **Go Live (EHX to System)** to push the changes to the matrix without performing a full download. There is no difference as far as the panel user is concerned but it can be a little faster for the administrator of the intercom.

**Go Live (System to EHX)** is the opposite. This pulls changes to live components present on the matrix back to the PC. This might be useful, for example, if you have previously made changes in **Go Live** but not saved them into the configuration and then want to get them back. Live changes are the same as offline changes so you would need to save your map file (to the PC) if you want to keep them for your next session. However, if you forget to do this, you can use **Go Live (System to EHX)** to get the changes back from the matrix. The offline equivalent of this is **Retrieve Map from Matrix**, which replaces the entire software configuration (on the PC) with that on the matrix.

The final option, **Go Live (Visual Merge)**, allows a comparison of what is **In EHX** (PC) and **On Matrix** (system). Figure 2 shows an example. You can choose whether to take EHX changes and push to the matrix or take the matrix changes and retrieve to EHX. The option that you choose applies to all. You cannot select individual items but it does allow you to see what is different, which can then inform subsequent changes. You can export the differences to a .txt file to aid in this way.

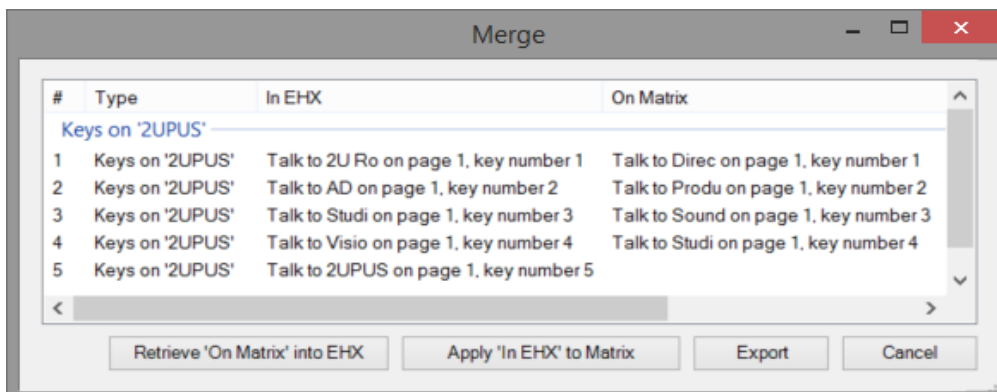
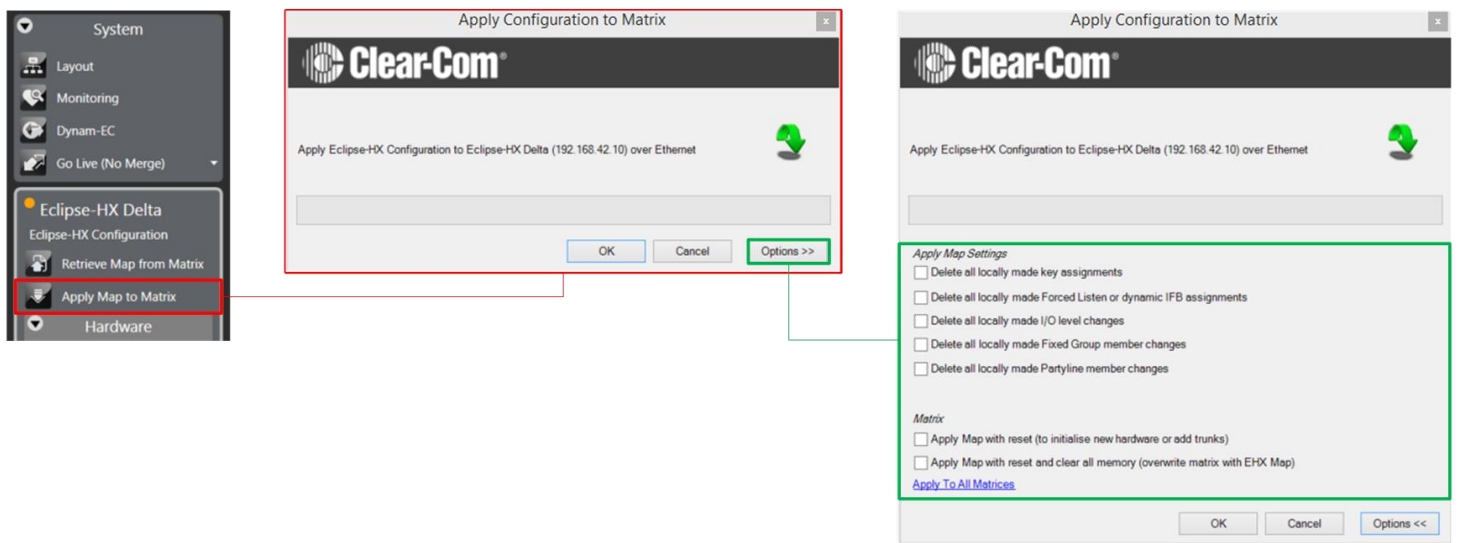


Figure 2 Example of a visual merge report, showing differences between keys on a panel in EHX vs. on the matrix.

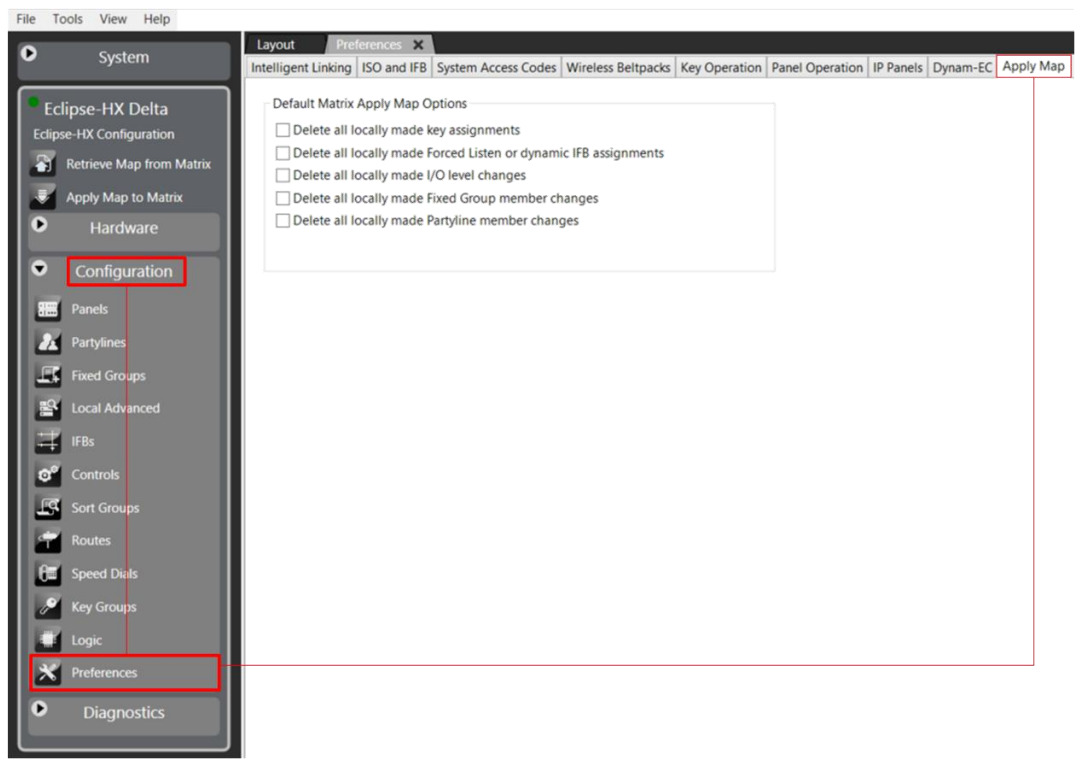
Applying the entire configuration from the PC to the matrix (system) can be done with several options in force. Clicking **Apply Map to Matrix** brings up a simple dialogue box, which can be expanded to show these options (Figure 3).



*Figure 3 Breakdown of potential steps when applying configuration changes from the PC to matrix hardware. The red-outlined box is the simple download. Clicking the **Options >>** button expands out to give the list shown on the right (outlined in green).*

The simple box (outlined in red in Figure 3) downloads the configuration from the PC to the matrix without a reset or loss of audio. This is done with the **default Apply Map Settings**. For a new project in EHX, this means that none of the options in the green box of Figure 3 are checked. This download dialogue can be opened using Ctrl + D on the keyboard, so the fastest method of download a map is Ctrl + D, Enter.

The default *Apply Map Settings* options are user-definable in Configuration>Preferences>Apply Map (Figure 4).



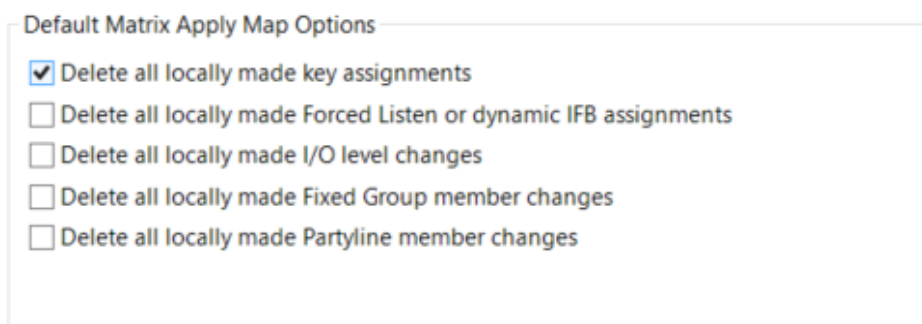
*Figure 4  
Use  
Configuration >  
Preferences >  
Apply Map  
to change your  
default download  
settings.*

## Download changes not taking affect

Download settings are a source of potential confusion. For example:

- I make changes to the keys on my “Director” panel in live mode
- Later I make changes to the same keys on the “Director” panel but this time, I configure the keys offline and then perform a download using Ctrl + D, Enter.
- The keys do not update

The problem here is that live changes are considered differently to offline EHX changes and live changes prevail if the first option in the *Apply Map Settings* is not checked. If you check this option, EHX changes prevail. Therefore, if your workflow includes the use of **Live mode** but your panel-users do not add their own keys (using Fast Key Assign or Soft Assign Mode), you should ensure that this option is checked in your default *Apply Map Settings* (Figure 5).

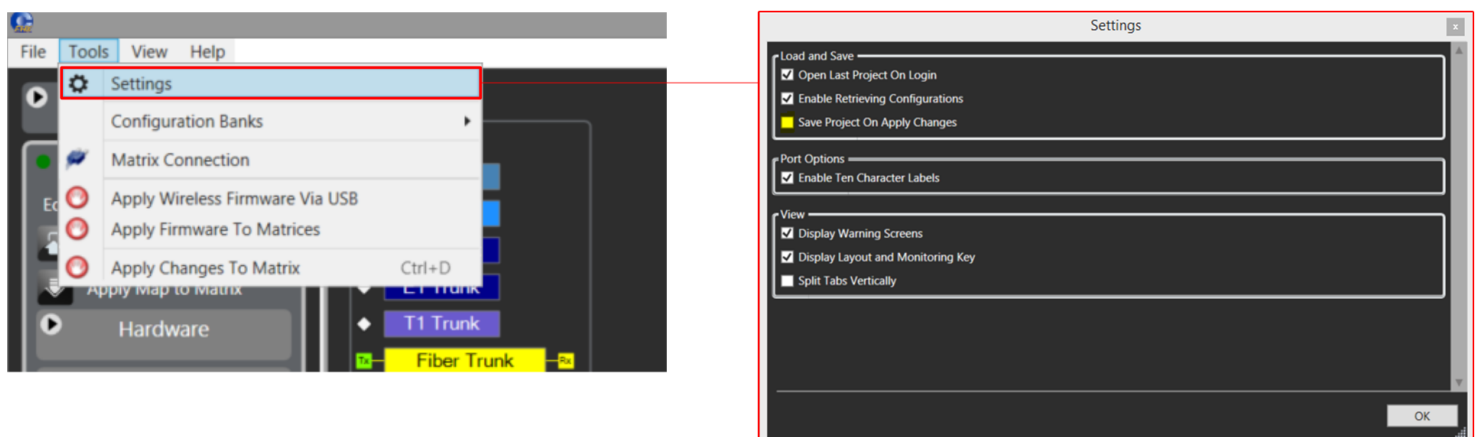


*Figure 5 Tick **Delete all locally made key assignments** when applying map changes to ensure that any live changes are overwritten or removed.*

This option then deletes any changes made in **Live mode**.

If you want to permanently save changes made in **Live mode** that are not present in your EHX configuration (because they were not previously saved or because they were panel-user assigned), you can first go live using **System to EHX**.

Make sure to save your project at regular intervals to ensure this situation is rare. You can either manually save using File>Save Project (or Ctrl + S) or you can choose to have the project saved automatically when applying the map to your matrix (Figure 6). This auto-save option is off by default.



*Figure 6 Use Tools>Settings>Save Project On Apply Changes to setup Auto-Save. This option is off by default.*