


## 5.5 Setting the matrix type

The Eclipse HX-Median and Eclipse HX-Omega matrix frames run common software, which means that when you upgrade the application code for the CPU card, the CPU card cannot automatically distinguish between the two matrix types. You must therefore set the matrix type in EHX.

**Note:**

*The Eclipse HX-PiCo runs its own matrix-specific software, and will always identify itself as an Eclipse HX-PiCo on hardware discovery. There is therefore no requirement to set the matrix type for the Eclipse HX-PiCo.*

To set the matrix type:

1. In EHX, select **Diagnostics > Event Log**.
2. In the **Matrix Event Log** tab, Click the **Play** icon [  ].
3. Click **Request info**. In the dialog (see **Figure 20: Setting the matrix type**), enter the following custom command:

```
Custom 145.1.12096. <2 == Eclipse HX-Median, 3 == Eclipse HX-Omega>
```

Click **Send**.

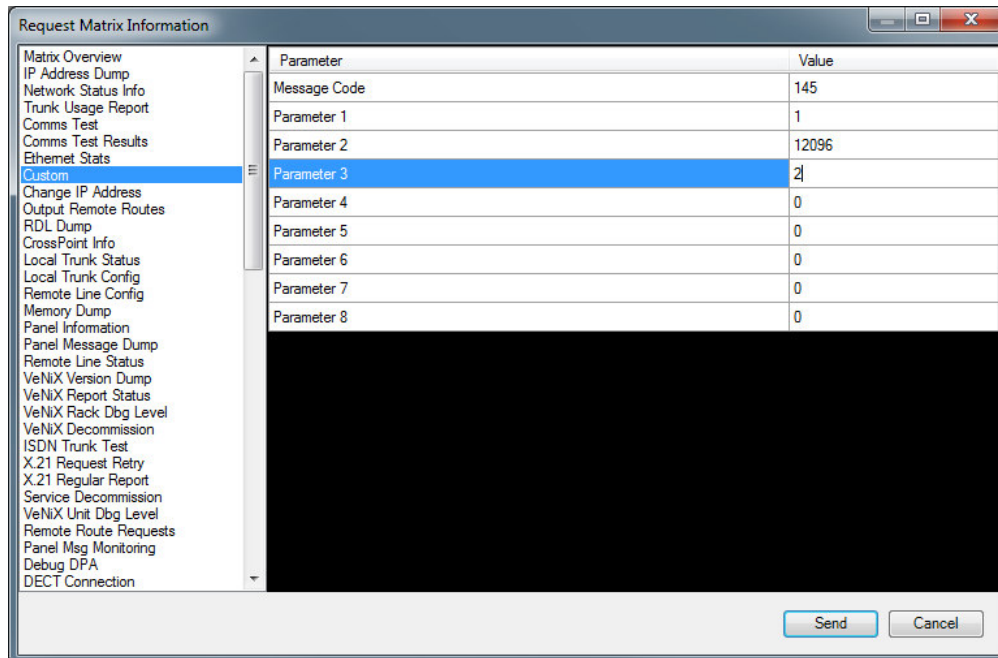


Figure 20: Setting the matrix type