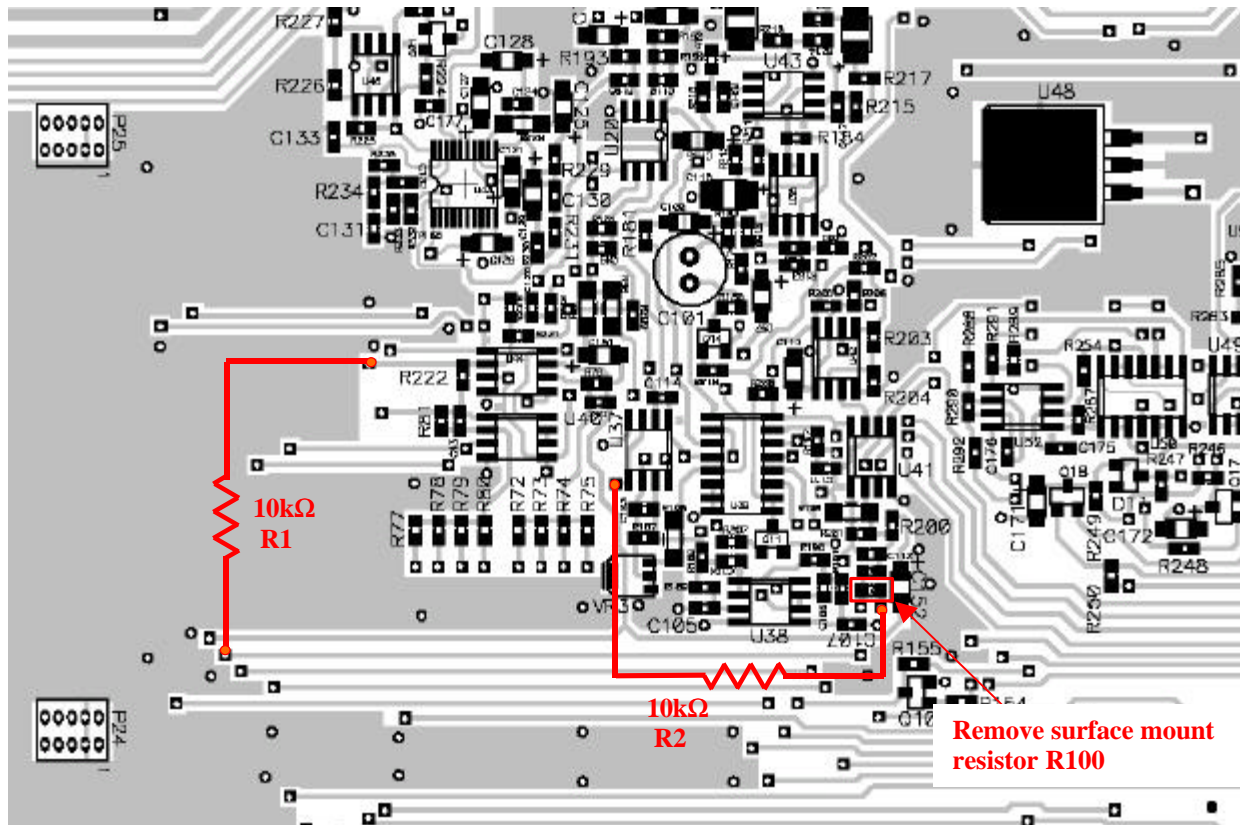


WBS-680 Audio Board Auxiliary Input Internal Modification

(Raw Board No. 750608 Rev A)



PURPOSE: This modification “disconnects” auxiliary input audio from being placed onto any wired intercom system connected to the unit. The auxiliary input audio is heard locally, within the base station and its’ beltpacks, but not sent to the wired interface. This modification does not affect auxiliary audio out, thus auxiliary out will contain I/C B audio, which is composed of all locally generated audio (base and beltpacks) and all wired intercom audio.

REMOVING AND REPLACING THE RECEIVER BOARD: To gain access to the audio board, the receive board must be removed. Remove the seven screws securing the receive board and pull the board straight up. When replacing the receive board care must be followed regarding the connectors. Most of the connectors are self-guiding, however two connectors near the outside edges of the board are not. Make sure the two pin connector, J310, and the four pin connector, J311, are in their mating receptacles on the audio board. Firmly press the board back into place and replace the screws.

CONNECTION DETAILS: Connect R1 from the auxiliary trace to pin 2 of U44 via the trace extending from U44. Remove surface mount resistor R100 (10k Ω). Place resistor R2 from the via just below the removed resistor to pin 5 of U37. Resistors R1 and R2 are 10k Ω and 1/8 Watt. Ensure the resistor leads cannot short to ground or another trace. Small diameter heat shrink may be used over the leads to insulate them.