

3

SUPPORTED USB DEVICES

This section describes the USB audio devices that are currently supported by Concert:

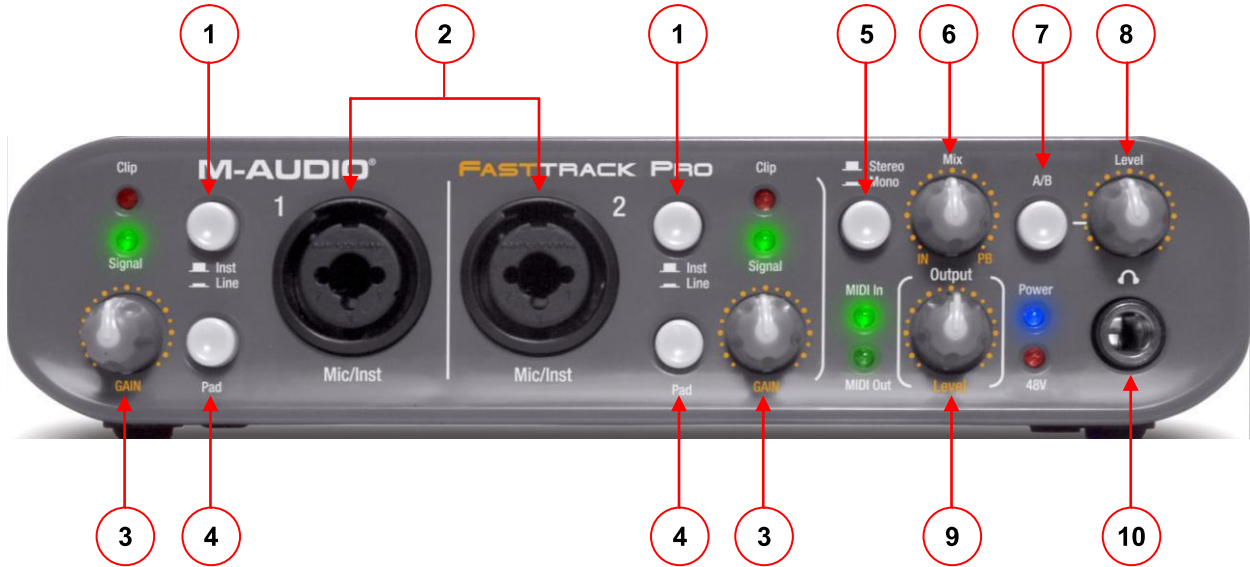
- M-Audio Fast Track Pro ©
- M-Audio Fast Track Ultra ©

Note: If you connect a second M-Audio © device to a USB port (after disconnecting the first one), it will not be recognized. To avoid this, use different ports if you are using more than one type of M-Audio © device.

Note: You will be prompted to install the M-Audio © driver each time you connect an M-Audio © device to a new USB port.

Note: Connecting USB 4-wire devices to any type of external USB hub or port replicator is not supported by Concert.

M-AUDIO - FAST TRACK PRO © (FRONT)



Use "In" position for line level inputs.

Adjust knob to "full-clockwise" position (PB).

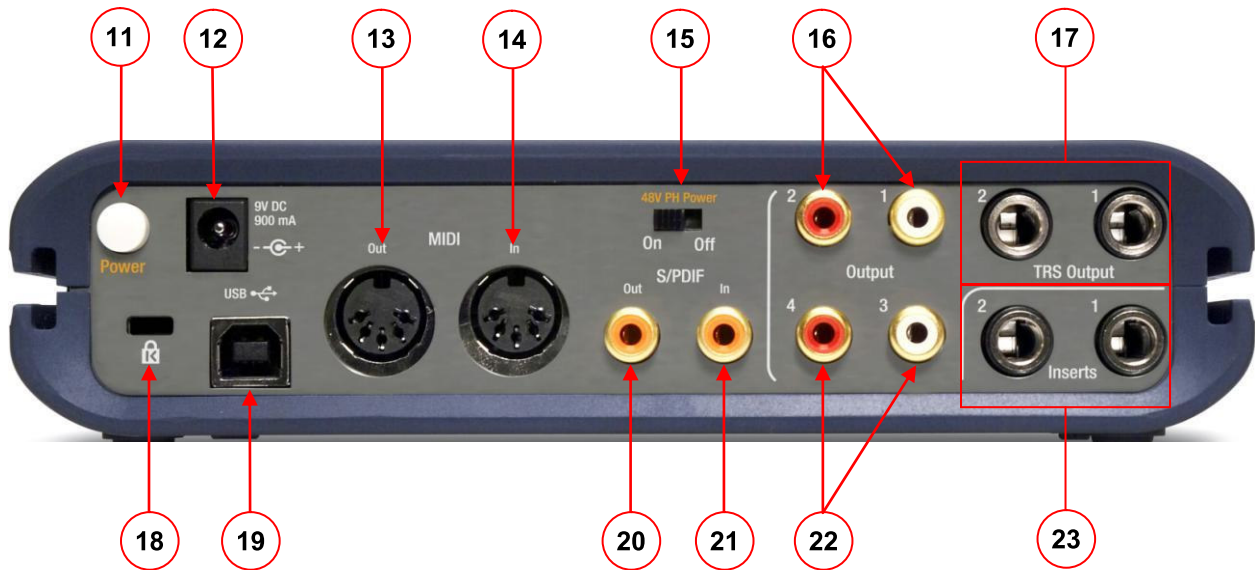
Feature	Description
1	<p>Instrument/Line Selector Button: Selects the input level of the front panel 1/4-inch inputs (does not affect XLR input level):</p> <ul style="list-style-type: none"> • "In" position: Accepts line level inputs. • "Out" position: Inputs accept instrument level signal.
2	<p>Microphone/Instrument Inputs: Combo connectors XLR or 1/4-inch TS for powered microphone or instrument level inputs.</p>
3	<p>Input Gain Level Knob: Controls input level of associated Mic/Inst input (2). Variable gain range is >40dB.</p>
5	<p>Stereo/Mono Button: Toggles the direct input monitoring between stereo and mono operation.</p>
6	<p>Input/Playback Mix Level Knob: Controls the audio mix sent to the line outputs, fading between the input signals and the output signal from any audio application software:</p> <ul style="list-style-type: none"> • Clockwise (PB): Only output signal from DAW software is heard at line outputs. • Counter-clockwise (IN): Only input signals are heard at line outputs.

Use "Out" position (A) to select outputs ports 1 & 2.

DO NOT use "Off" (full counter-clockwise) position—neutral position is recommended.

Feature	Description
7	<p>A/B Monitor Selector Button: Selects output source sent to Level knob (8):</p> <ul style="list-style-type: none"> • "Out" position (A): Main line output signal is sent to headphone outputs. • "In" position (B): Signal assigned to S/PDIF output is sent to headphone outputs (not supported by Concert).
8	<p>Headphone Output Level Knob: Controls output level to Headphone output (10). Independent of main Output Level knob (9).</p>
4	<p>Pad Button:</p> <ul style="list-style-type: none"> • "In" position: 20dB pad is inserted into input circuit.
9	<p>Output Level Knob: Controls signal level at line outputs—-independent from the Level knob (8).</p>
10	<p>Headphone Output: 1/4-inch stereo TRS headphone jack. Output level is controlled by Level knob (8). Source is selected by A/B button (7).</p>

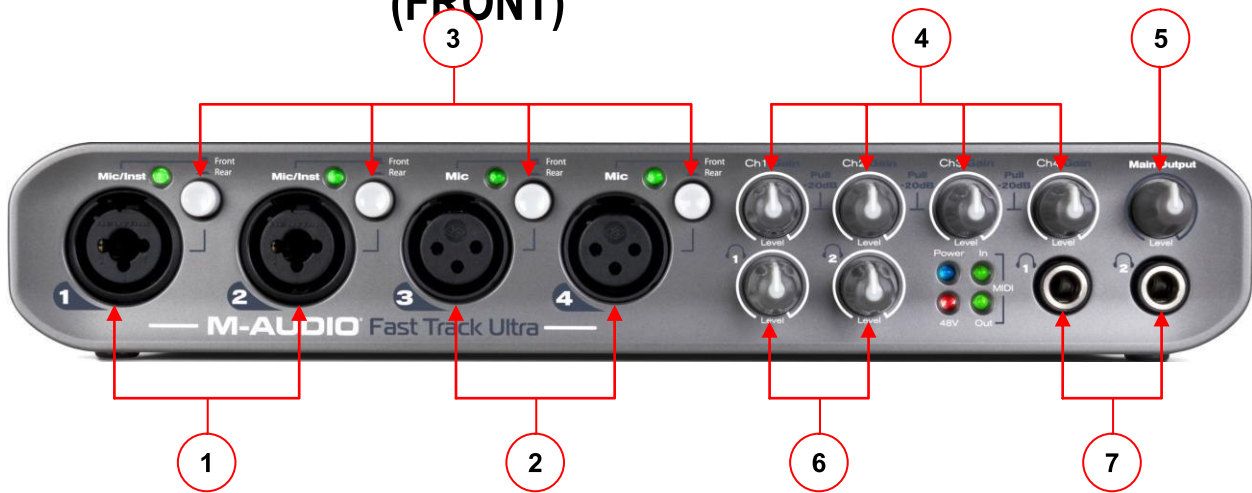
M-AUDIO - FAST TRACK PRO © (BACK)



Feature	Description
11	Power Button: Press to power on. Unit must be connected to host computer's USB bus or optional external power supply.
12	Power Supply Connector: Connect optional 9V DC 500mA power supply when using as stand-alone unit.
13	MIDI Output: Not supported by Concert.
14	MIDI Input: Not supported by Concert.
15	Phantom Power Switch: Slide to "On" position to send 48V power to front-panel XLR inputs (for use with powered microphones).
16	Unbalanced Outputs 1 and 2: Unbalanced outputs on RCA connectors. Mirrors signal to TRS Outputs 1 and 2 (17).
17	Balanced Outputs 1 and 2: Balanced 1/4-inch TRS jacks. Output signal is controlled by front-panel Output Level (9) and Input/Playback Mix Level (6).
18	Cable Lock Port: Accepts security cable to protect device from theft.
19	USB Input: Connect standard USB cable to this port from host computer.
20	S/PDIF Output: Not supported by Concert.

Feature	Description
21	S/PDIF Input: Not supported by Concert.
22	Unbalanced Outputs 3 and 4: Unbalanced outputs on RCA connectors. Mirrors signal from S/PDIF output (20) (not supported by Concert).
23	Inserts 1 and 2: Not supported by Concert.

M-AUDIO - FAST TRACK ULTRA © (FRONT)

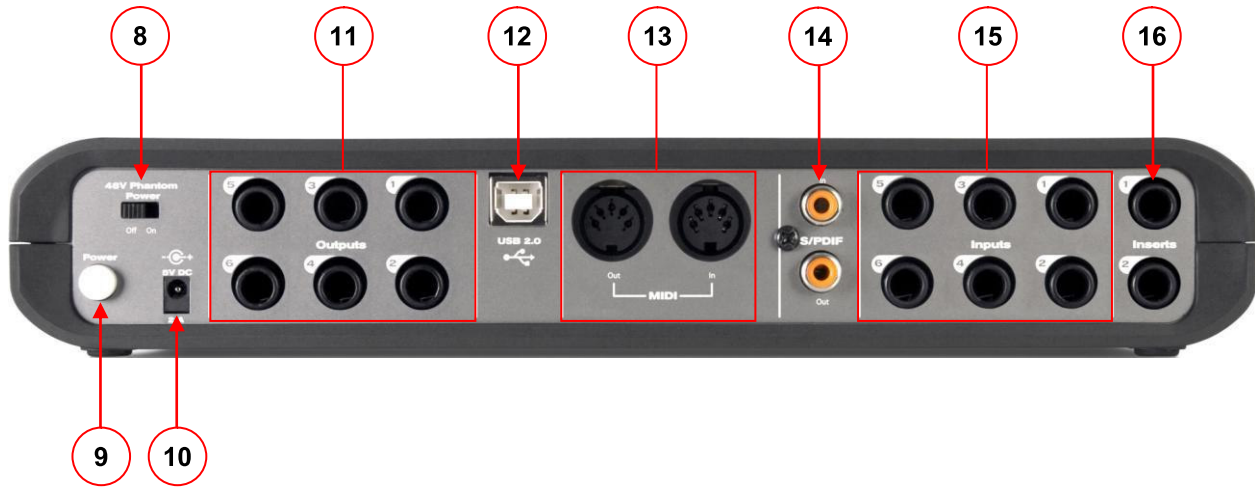


Feature	Description
1	Combo Connectors: XLR or 1/4-inch TS for powered microphone or instrument level inputs (not used with Concert).
2	XLR Connectors: for powered microphone or instrument level inputs (not used with Concert).
3	Front/Rear Switches: Select between the front XLR inputs and rear panel line inputs. Press to select rear inputs.
4	Mic/Instrument Gain/Pad 1-4: Adjust input gain for Ports 1-4. Pull knobs out to engage a 20 dB pad on input (not used with Concert).
5	Main Output: Adjusts level for rear output ports 1 & 2.
6	Headphone Output Knobs: Adjust volume for two headphone outputs.

Always use "In" position (for line level inputs).

Feature	Description
7	Headphone Outputs: Two 1/4-inch TRS jacks, controlled by Headphone Output knobs (6).

M-AUDIO - FAST TRACK ULTRA © (BACK)



Feature	Description
8	Phantom Power Switch: Sends 48V power to front XLR inputs (for use with powered microphones).
9	Power Button: Press to power on the Fast Track Ultra. The unit must be connected to the host computer's USB bus or the external power supply.
10	Power Supply Connector: Connect optional 9V DC 500mA power supply when using as stand-alone unit.
11	Line Outputs: Six balanced 1/4-inch (TRS) jacks provide analog outputs. Ports 1 and 2 are controlled by front panel main output knob.
12	USB (2.0) Connector: Accepts standard USB cable from host computer.
13	MIDI Inputs: Not supported by Concert.
14	S/PDIF Outputs: Not supported by Concert.
15	Line Inputs: Six 1/4-inch TRS jacks provide balanced/unbalanced analog inputs.
16	Inserts: Not supported by Concert.

Always use "In" position on front panel buttons to activate these ports.

DEVICE DRIVERS

You can find the latest device drivers for M-Audio © products on their company website:

1. In the **Address** field of your browser, type <http://www.m-audio.com/> and then press **Enter**.
2. Under *Quick Links*, choose **Drivers/Updates**. The *Drivers and Software Search* page appears.

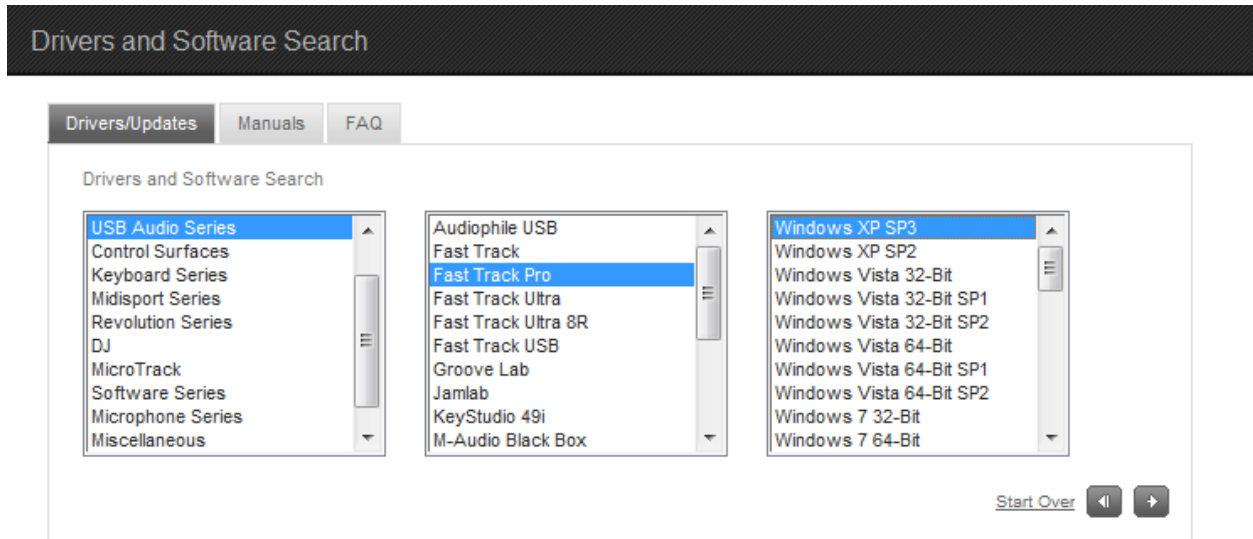


Figure 3-1: Device Driver Search

3. In the left-hand panel, choose **USB Audio Series**.
4. In the center panel, choose your device model (e.g., **Fast Track Pro**).
5. In the right-hand panel, choose your operating system (e.g., **Windows XP SP2**).
6. The driver file appears in the *Results* area, at the bottom of the page.
7. Click on the filename. Completion of the survey is optional and is not required to download the driver.
8. Scroll down to the bottom of the survey. To download the driver, click on the filename.

© 2009 Avid Technology, Inc. Used with permission.

The following dialog appears:

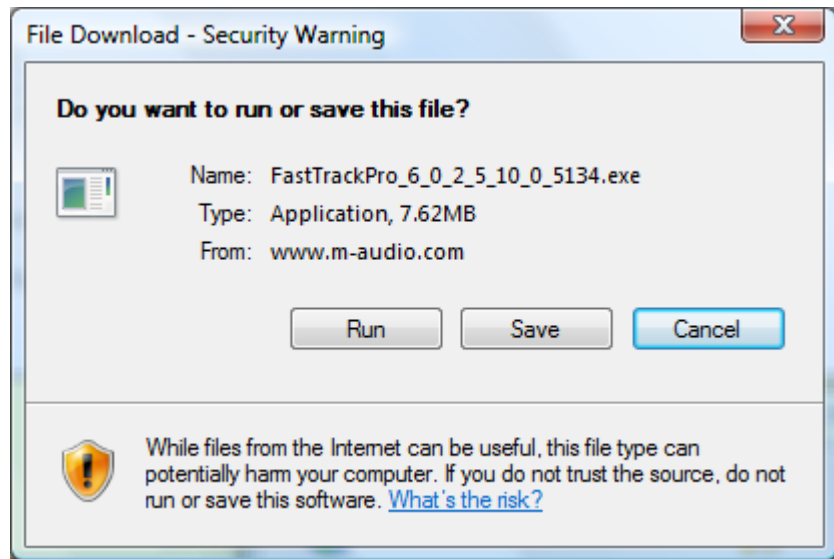


Figure 3-2: Device Driver Installation

9. Click **Run** to install the driver.