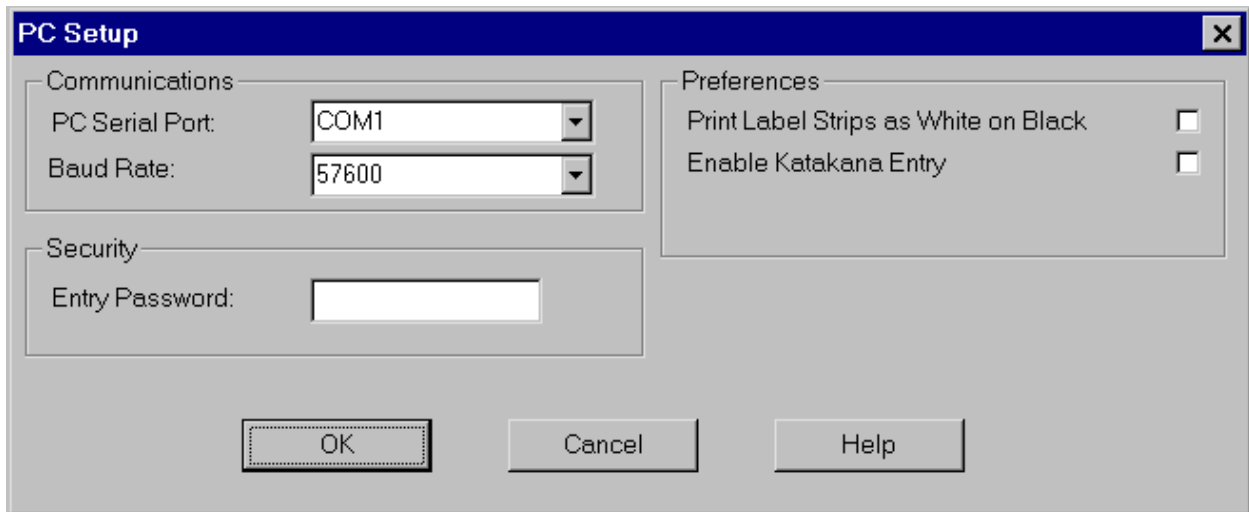

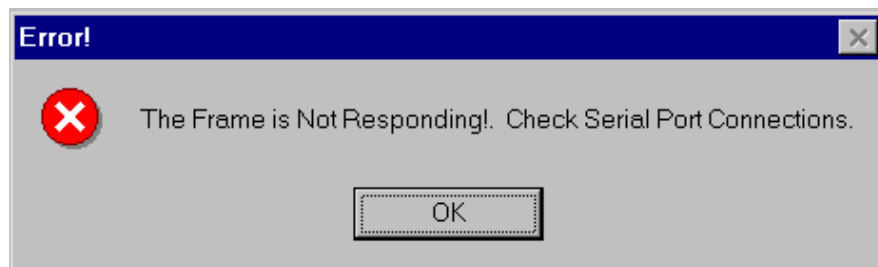


## PC Setup screen



To establish PC communications, select the  on-line icon in the toolbar. The software will establish communication and retrieve the on-line information from the matrix; a status bar will indicate progress. Once this step is complete, the title bar will display on-line.

If the following message appears,



verify that the serial port is configured properly and that it is working. It may also be necessary to verify that the serial cable is connected and wired properly.

Note: Baud Rate is set at 57600 and cannot be changed in software.

Set PC serial port to Com 1, 2, 3 or 4.

PC serial port settings:

Bits per second: 9600

Data Bits: 8

Parity: None

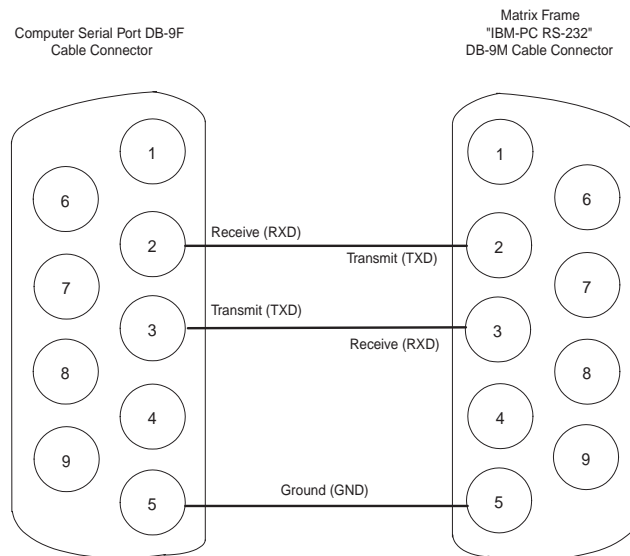
Stop Bits: 1

Flow Control: None

## Matrix Frame to IBM-PC Wiring

The IBM-PC RS-232 connector is used to connect an external PC to the Matrix frame. This computer runs the Matrix Plus 3 System Configuration Program. To configure the serial port refer to the configuration program manual.

Subsequent figures show the connections for a cable that connects the matrix frame to the computer. Two versions are shown, the first (Figure O-14 on page O-35) for a computer serial port with a DB-9M connector on the back (cable connector is female), the second (Figure O-15 on page O-36) for a computer serial port with a DB-25M connector on the back (cable connector is female).



**FIGURE O-14: IBM-PC DB-9, RS-232 Cable**